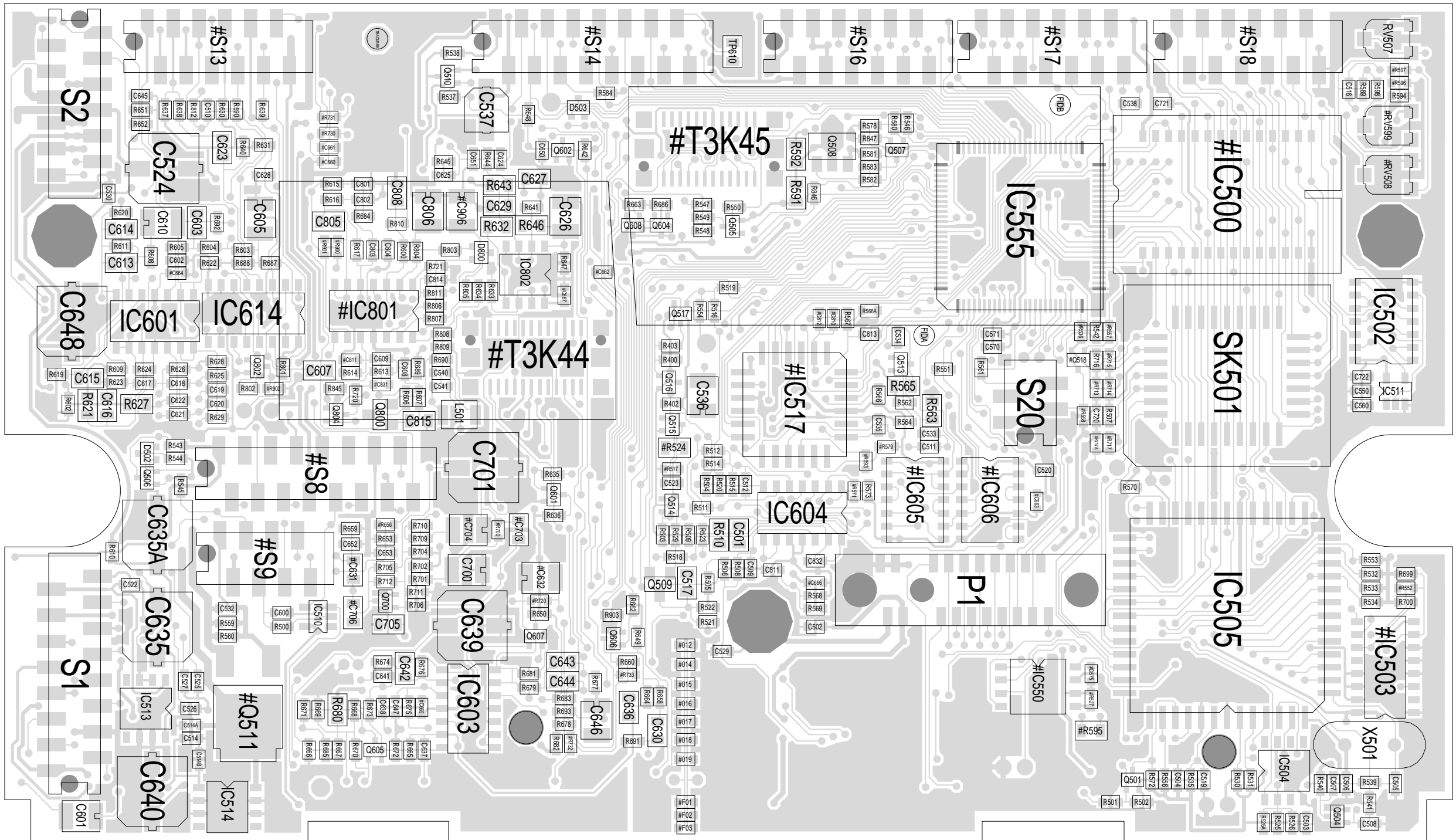


REV/ISS	AMENDMENTS	DRAWN	CHKD	D.O.	APVD	DATE
09A	UPDATE S20 PIN SIGNALS. CCO:1344-003	RPS				19/07/01
08A	ADD CONNECTOR FOR LOOM. CCO:1344-002	RPS				02/04/01
07A	ECO - 210703	CKK		EB		13/09/00
06A	UPDATE CIRCUITRY ECC: 21 0900 21 0585. CCO:1344-001	RPS				18/07/00
5A	CN:97/10-618/10-614	RPS				11/12/98
4A	ADU:UPDATE COMPONENTS/DEVICES	RPS				02/07/97
3A	MOVED RX-CTCSS TRACK	M.HALL				5-7-96
2A	SELCALL/SD CONNECTIONS	SD				
1A	JUST A COUPLE OF SMALL MODS -NOT!	DBH				

© TAIT ELECTRONICS
 T2000 ENHANCED HC11 PLATFORM
 CONTROL BOARD
 PROJECT: T2000 RPS 1344098 19-Jul-01
 DESIGNER: RPS
 FILE NAME: T2000.PLT
 FILE DATE: 19-Jul-01
 NO SHEETS: 2
 SHEET: 2

15
14
13
12
11
10
9
8
7
6
5
4
3
2
1

A
B
C
D
E
F
G
H
J



TAIT ELECTRONICS IPN: 220-01344-09 ISS: A ID: 1.TA DATE: 19 Jul 2001
T2K ENHANCED PCB LAYOUT - TOP SIDE

Scale: 2.3:1 ; Rotation: 270 degrees

15

14

13

12

11

10

9

8

7

6

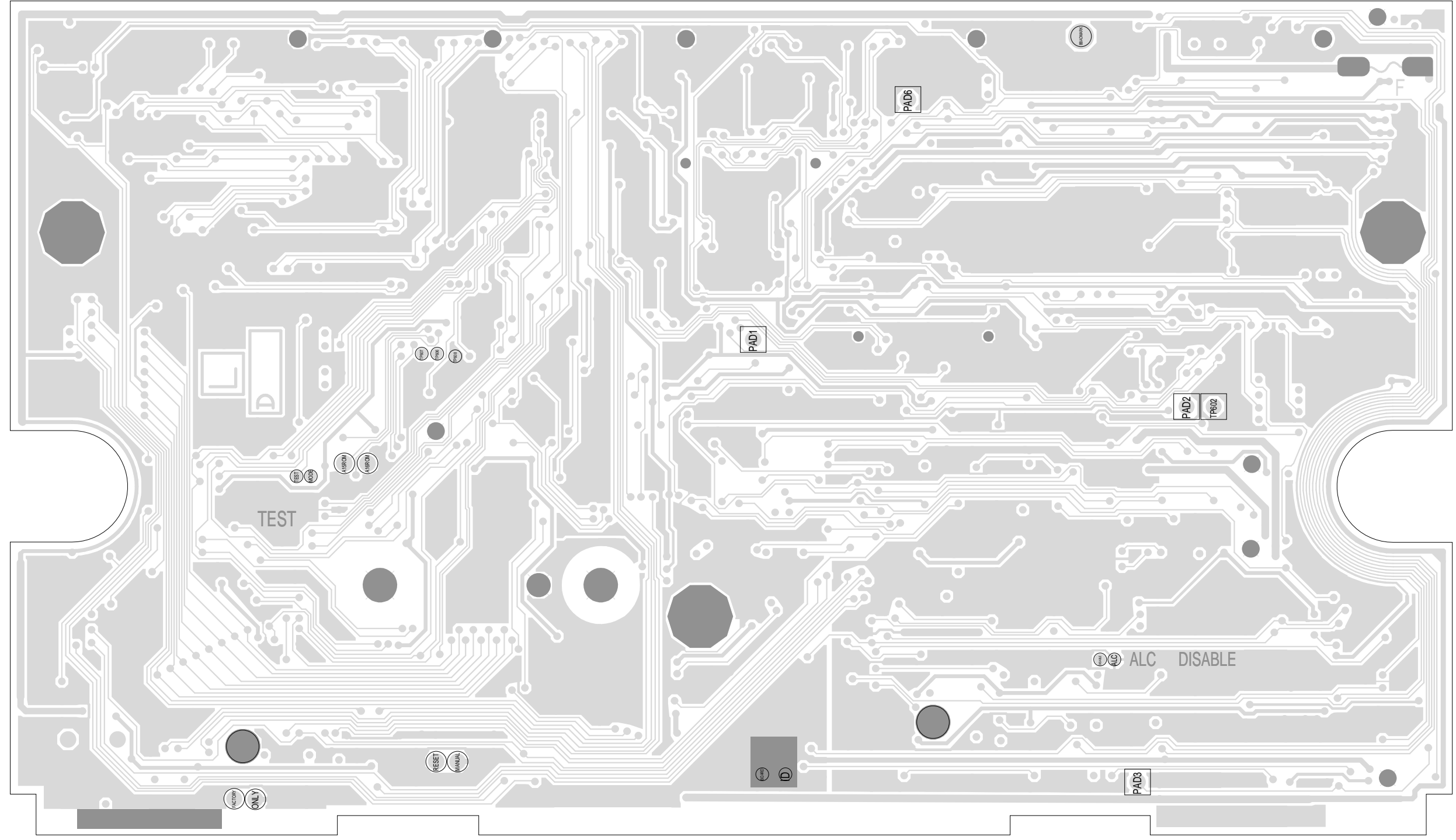
5

4

3

2

1



A

B

C

D

E

F

G

H

J

TAIT ELECTRONICS	IPN:	ISS:	ID:	DATE:
	220-01344-09	A	2.BA	19 Jul 2001
T2K ENHANCED PCB LAYOUT - BOTTOM SIDE				

Scale:2.3:1 ; Rotation: 90 degrees